

# Specializing in Railroad Ties

**Headquartered in Lake Oswego, OR, Westlake Timber Supply has strategically placed inventories placed across North America with the ability to deliver wherever and whenever material is needed.**

We maintain inventories of all standard sizes, including both 6"x8" & 7"x9" Cross Ties and Switch Ties.

Working with Class One, Short line railroads and railroad contractors all ties are graded and treated to comply with individual railroad specifications, meeting or exceeding both AREMA and AWP standards.

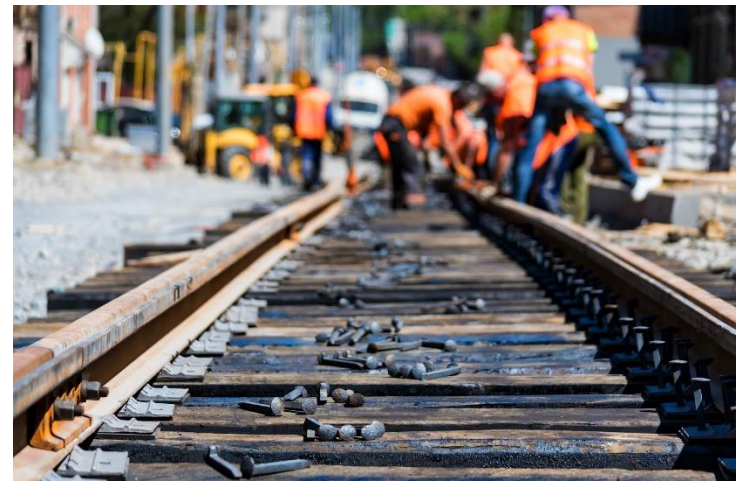
In addition to all standard railroad ties, we offer custom cutting and fabrication with a choice of treatment: creosote, copper naphthenate, ACZA and/or Borate treatment.

Not only are truck load and rail car quantities/deliveries available, we offer 'Vendor Managed Inventory' options to our long-term partners.



## WE OFFER:

- 6" x 8" x 8'6" | AREMA Grade 3
- 7" x 9" x 8'6" | AREMA Grade 4 & 5
- Industrial Grade
- 7" x 9" x 9-17' Switch ties sets
- Mixed Hard Wood or 100% Oak
- Dual Treatment: Borate | CREO
- 100% End Plating
- Truck & Rail car delivery
- Multiple preservative available:  
*Creosote*  
*Copper Naphthenate*  
*ACZA*



Alan Cox | Westlake Timber Supply, LLC | CEO

5 Centerpointe Drive, Suite 400, Lake Oswego, OR 97035

Office: (503) 509-6627 Mobile: (205) 7253-725

[Alan@westlaketimbersupply.com](mailto:Alan@westlaketimbersupply.com) | [www.westlaketimbersupply.com](http://www.westlaketimbersupply.com)

*To learn more about our VMI Programs, please give us a call 503-509-6627*